



# FAST FACTS

[maricopa.edu](http://maricopa.edu)



**MARICOPA**  
COMMUNITY COLLEGES

Chandler-Gilbert | Estrella Mountain | GateWay | Glendale | Mesa  
Paradise Valley | Phoenix | Rio Salado | Scottsdale | South Mountain

# Our Mission

---

The Maricopa Community Colleges provide access to higher education for diverse students and communities.

## We focus on learning through:

- University Transfer Education
- General Education
- Developmental Education
- Workforce Development
- Student Development Services
- Continuing Education
- Community Education
- Civic Responsibility
- Global Engagement



Maria Harper-Marinick, Ph.D.  
Chancellor

# Our Vision

---

A Community of Colleges...Colleges for the Community...working collectively and responsibly to meet the life-long learning needs of our diverse students and communities.

The **Maricopa County Community College District** (MCCCD) is one of the largest community college systems in the nation, comprised of 10 regionally-accredited colleges that serve a diverse student body in the greater Phoenix, Arizona area.

Chandler-Gilbert  
Estrella Mountain  
GateWay  
Glendale  
Mesa  
Paradise Valley  
Phoenix  
Rio Salado  
Scottsdale  
South Mountain



WE  
**VALUE**

Community  
Excellence  
Honesty and Integrity  
Inclusiveness  
Innovation  
Learning  
Responsibility  
Stewardship

Approximately 200,000 students enrolled in credit and non-credit courses at a Maricopa Community College in 2015-2016

## Student Profiles Fall 2016

### GENDER



Undeclared 1%

AVERAGE AGE 25

### CREDIT HOURS

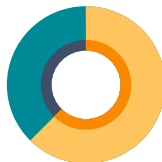
*Average Class Load*



8.5  
hours

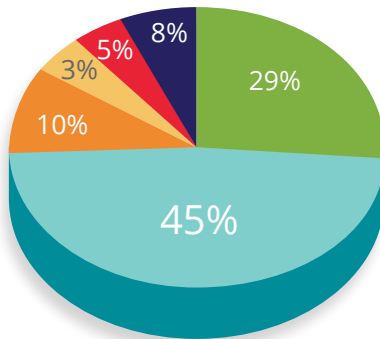
### STUDENT ENROLLMENT

32%  
Full-time



68%  
Part-time

## ETHNICITY



## EDUCATIONAL INTENT

Transfer to University	38%
Enter/Advance in Job Market	25%
High School Student	19%
Personal Interest	12%
University Student	2%
Undeclared	4%



## Prior Educational Experience

No College or University	40%
Some College or University No Degree	28%
Some College while in High School	2%
Associate's Degree	3%
Bachelor's Degree	4%
Master's Degree	2%
Undeclared	21%



## Residency

### Student Residency Classification

Maricopa County Resident	94%
Out-of-County	2%
Out-of-State	4%

## Programs and Degrees

The Maricopa Community Colleges offer **Associate's Degrees** in Arts, Business, Science, General Studies, and Applied Science.

Students seeking expertise in a specific occupation can pursue numerous **Associate's of Applied Science Degrees** or **Certificates of Completion**.

Students who plan to **transfer** may complete the 35-credit hour **Arizona General Education Curriculum Certificate (AGEC)**.

Continuing and Community Education **non-credit classes** meet the life-long learning needs of the community.



### DEGREES AND CERTIFICATES CONFERRED (2015-16)

Transfer Degrees	8,077
Transfer Certificates	7,830
Occupational Awards	12,001

**Total Awards** **27,908**

## 2015 -16 Top Areas of Study:

- Liberal Arts and Sciences /General Studies
- Healthcare and Related Programs
- Business, Management, Marketing, and Related Services
- Physical Sciences
- Computer and Information Sciences
- Visual and Performing Arts
- Education
- Protective Services
- Engineering
- Mechanic and Repair Technologies



## COURSES WITH HIGHEST

- ENG101** First-Year Composition
- PSY101** Introduction to Psychology
- ENG102** First-Year Composition
- CPD150** Strategies for College Success
- MAT151** College Algebra/Functions





## CREDIT-HOUR ENROLLMENT

- CIS105** Survey Computer Info Systems
- CHM130** Fundamental Chemistry
- ENG091** Preparatory Academic Writing III
- COM100** Introduction to Human Communication
- MAT121** Intermediate Algebra

\*Based on Fall 2016 Full-time Student Equivalent

## Transfers to Universities

- Approximately **10,400** students transferred with 12 or more credits from MCCCDC to a 4-year college/university the following year (2014-15).\*
- More than **7,500** students transferred to an Arizona public university in 2014-15.\*\*
- More than **8,800** students with 12 or more MCCCDC credits earned a bachelor's degree from an Arizona public university in the 2014-15 school year (*the most current data available*).\*\*

\* Source: National Student Clearinghouse

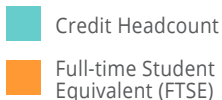
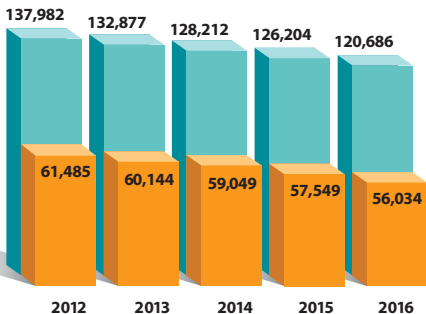
\*\* Source: Arizona State System for Information on Student Transfer (ASSIST)



## FALL 2016 45TH DAY HEADCOUNT AND FULL-TIME STUDENT EQUIVALENT (FTSE) BY COLLEGE

College	Headcount	FTSE
Chandler-Gilbert	14,630	7,652
Estrella Mountain	9,344	4,906
GateWay	5,058	2,405
Glendale	19,000	10,156
Mesa	20,508	10,576
Paradise Valley	8,393	4,203
Phoenix	11,508	6,019
Rio Salado	18,636	3,434
Scottsdale	9,551	4,534
South Mountain	4,058	2,149
<b>Maricopa District</b> (Sum of Colleges)	<b>120,686</b>	<b>56,034</b>

## FALL 45TH DAY 5-YEAR TREND



### Employees (Nov. 1, 2015)

Full-time Faculty .....	1,498
Adjunct Faculty .....	4,822
Administration, Clerical, and Support Staff .....	2,945
<b>Total Employees</b>	<b>9,265</b>

\* Data taken from the 2014-15 IPEDS - Human Resource Report for MCCCCD as of November 1, 2015. Full-time faculty includes residential faculty, temporary faculty, and other full-time instructional staff. These are the most current IPEDS HR data available.

Millions of students have attended a Maricopa Community College since 1963.

## Financial Overview\*

During the most recent periods, the three major national bond rating agencies continued to award MCCCDC their highest triple A ratings for the District's general obligation bonds.

\*Source: MCCCDC Financial Reporting Office

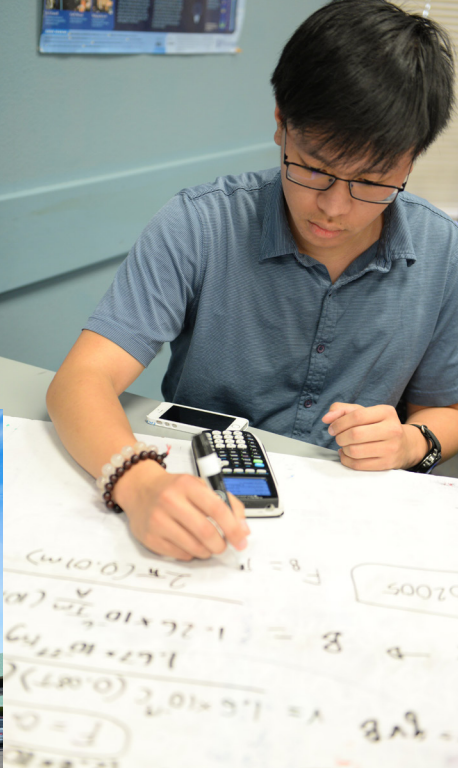


2016 -17  
**OPERATING BUDGET**  
**\$733,655,272**

## ACTUAL REVENUES (2015-16)

Property Tax	50%
Tuition and Fees	22%
Grants and Contracts	17%
Prior Bond Proceeds	6%
Transfers and Other Revenue	5%
State Appropriations	0%





## Tuition Rates 2016-2017

---

<b>General Tuition*</b>	<b>\$86</b>
<b>Surcharges*</b>	
Out-of-County Resident <i>(Greenlee and Apache Counties only)</i>	\$297
Out-of-State Resident	\$241
<b>Registration Fee per Semester</b>	<b>\$15</b>

\*Per credit hour

# Workforce Development

[www.maricopa.edu/workforce](http://www.maricopa.edu/workforce)

The Maricopa Community Colleges are recognized workforce development leaders in the Greater Phoenix area. Along with Rio Salado's Maricopa Corporate College, MCCCDC helps to fulfill the job training needs of employers across many industries in Maricopa County.

MCCCDC plays a vital role in enhancing the region's competitive strength and economic health by providing skilled workers for high-demand careers in healthcare, public safety, information technology, business, and manufacturing.

## WORKFORCE TRAINING\*

The Maricopa Community Colleges partner with hundreds of organizations in the public and private sectors to provide workforce training.

\*Source: MCCCDC Office of Business and Workforce Development



## Workforce Development at Maricopa Community Colleges

- One of the largest providers of job training in Arizona
- Leaders of business and industry workforce training for more than five decades



## The Foundation

The Maricopa Community Colleges Foundation raises money to provide support for scholarships, programs and services that advance the mission of the Maricopa Community Colleges.

The Maricopa Colleges Foundation received **2 million dollars** in gifts from more than 3,000 donors in 2015-2016, with 56 new funds created during the year.

Since its inception in 1977, the Maricopa Community Colleges Foundation has awarded more than **32 million dollars in scholarships.**



[www.maricopa.edu/foundation](http://www.maricopa.edu/foundation)



# Dedicated to Your Success.

- **University Transfer**
- **Career Training**
- **Affordable Tuition/Financial Aid**
- **Locations Throughout the Valley**

**maricopa.edu**



**MARICOPA**  
COMMUNITY COLLEGES

Chandler-Gilbert | Estrella Mountain | GateWay | Glendale | Mesa  
Paradise Valley | Phoenix | Rio Salado | Scottsdale | South Mountain

The Maricopa County Community College District (MCCCD) is an EEO/AA institution and an equal opportunity employer of protected veterans and individuals with disabilities. All qualified applicants will receive consideration for employment without regard to race, color, religion, sex, sexual orientation, gender identity, or national origin.